

you can  
**Canon**

**CLC1110**

superb quality network printer  
for graphic arts professionals

*Providing high precision colour  
for all your projects*



## *Keeping pace with your imagination*

Canon's new generation CLC1110 network imaging devices break every boundary - for colour, for precision image quality, speed, productivity, reliability and sheer networking power.

Just how professional do you want to be? Canon's latest digital colour printers extend the boundaries of what can be achieved with an in-house printer.

Now, finally, there is a network imaging solution that can keep pace with your imagination.

You can produce your proofs or short run colour documents with lightning speeds of 8.5 cpm A4 colour and 42 cpm in black and white and with 800 x 400 dpi - 256 half-tone gradations, all of your output will be of the highest quality.

The CLC1110 also has the capacity to handle up to 4,400 sheets with the optional paper tray. There are a host of finishing options available such as stacking, stapling and sorting on the CLC1110; you can even personalise each and every document through variable data printing.

And if that is what gives you the edge over your competitors, or enables you or your client to put on paper precisely what you had in mind then read on. These Canon printers are packed with features delivering a range of real business benefits.



## FEATURES THAT MAKE THE DIFFERENCE

The Canon CLC1110 innovative features improve in house colour reproduction even further, extending the quality and capabilities of print for graphic arts professionals.

## TAG BIT – DESIGNED FOR PERFECTIONISTS

The new Canon CLC1110 printer features new Tag Bit – technology that is designed for the perfectionist.

Tag Bit recognises type, key-lines and other solids and prints them at double the resolution of half-tones. That means no ragged edges – just clean, sharp lines.

## CREATIVE FREEDOM

Canon's new CLC1110 model give users total creative freedom through the ability to manipulate practically every variable element in the production process.

## OVER-SIZE – FULL-BLEED EFFECT UP TO A3

A3 paper measures 297 mm x 420 mm.

The new Canon CLC1110 takes paper up to A3+ size with a printable area of 303 mm x 443.5 mm which means that you can produce full-bleed proofs or posters at A3 after trimming.

The additional printable margin allows you to print cropmarks, margin notes, or even A3+ posters.\*

\* Ink saturation on the margins outside the A3 area can diminish slightly.

## FIERY GRAPHIC ARTS PACKAGE

The optional Fiery Graphic Arts Package is a comprehensive suite of specialised design tools which enables graphic art professionals to achieve new standards of colour management and print quality.

Half-tone screening – simulates the final dots that will be imaged on films or plates.

Multiple plate separations – support CMYK plus one or more Pantone colours.

Soft proofing – shows accurate on-screen preview of ripped print jobs.

Auto-trapping – automatically corrects mis-registration.

Paper simulation – allows you to factor in the colour of the stock on which the job will be printed.

TIFF/IT input – allows input of TIFF/IT files to the RIP through a hot folder.

## SPOT-ON COLOUR

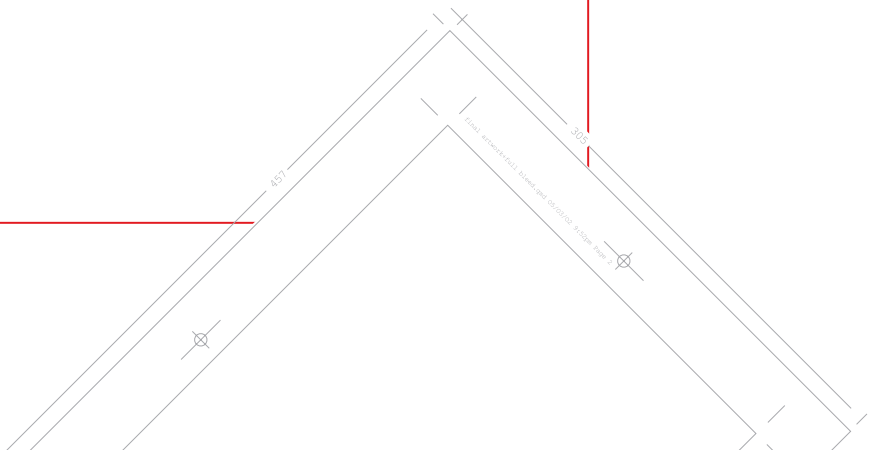
The Spot-On feature means you can store named colours in the Controller (Canon ColorPASS Z400/Z650) to ensure absolute consistency, for example whenever a company logo is printed.



400 dpi



800 dpi



## CANON COLORPASS Z650

Combining a Canon CLC1110 printer with the Canon ColorPASS Z400/Z650 server extends the scope of network printing further still.

It means that anyone on the network has the facility to exploit a huge range of editing and finishing options to create stunning colour documents and A3+ posters, and, of course, print them at high speed. The ColorPASS Z400/Z650 brings effortless control of the production process from previews, editing, printing, sorting and finishing.

Running Fiery Command Workstation™ software, the ColorPASS Z400/Z650 ensures optimum management and manipulation of centralised print jobs from desktop computers, advanced print and colour management and full network compatibility.

## Fiery WebTools™

Administer the ColorPASS via any Java-enabled browser. View and manage jobs as well as install drivers and utilities remotely.

## Fiery ColorWise™

Colour management software for highest quality and accuracy of colour output.

## Fiery DocBuilder™Pro™

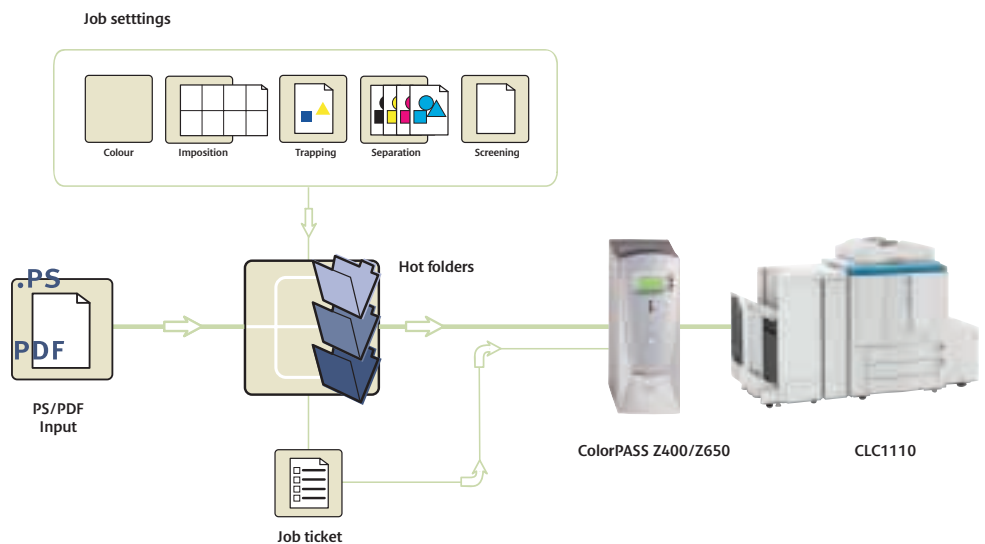
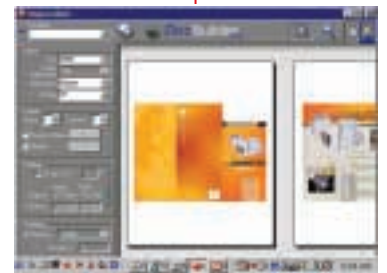
Edit and assemble entire documents before RIPping the files.

## Fiery Scan™

Scan remotely and distribute via email or store.

## Fiery NetWise™

Ethernet, Token Ring, Web connectivity. Perform print jobs via email.



## *Consistent output*

### QUALITY AND PERFORMANCE

The Canon CLC1110 is designed for quality and performance, resulting in greater productivity, improved document management, seamless networking and assured quality of both colour and black and white output. An impressive combination of hardware and software utilities give graphic arts professionals the speed, ease of use and precision needed for the most challenging print jobs.



## CLC1110 Specifications

Copy speed	A4 full colour 8.5 pages per minute, A4 black and white 42 pages per minute
Warm-up time	approx 8.5 minutes
First copy	full colour 19.9 seconds, black & white 11.4 seconds
Resolution	800 dpi equivalent x 400 dpi 256 gradations per colour. Copying colours full colour, mono colour and black. Zoom 25 - 400%
Acceptable originals	sheets, books and three-dimensional objects up to 2 kg
Maximum original size	A3 (297 x 420mm)/11x17 (279.4 x 431.8 mm)
Maximum print size	A3 over size, 303.4 mm x 443.5 mm (for crop marks)
Copy paper	209 g/m <sup>2</sup>
Paper feeding	2 cassettes (550 sheets each), stack by-pass:250 sheets, (optional) side paper deck (2,500 sheets)
Modes and features	area designation mode, marker editing, double sided copying (manual), cover mode, two-page separation, 2 in 1 mode, sharpness, frame erase mode, shift mode, colour creation mode, one touch colour, colour balance, image creation mode, multi-page, enlargement, automatic colour selection, transparency interleaving mode, auto calibration
Options	RDF (Document Feeder), 20-bin stapler sorter, 2,500 sheet paper deck, film projector, document tray, editor, control card
Dimensions (W x D x H)	768 x 774 x 1,000 mm
Weight	277.5 kg
Power requirement	230V/50Hz
Power consumption	max.1.5 kW

## ColorPASS Z650 Specifications

Simultaneous autoswitching protocols	EtherTalk Phase II, TCP/IP, Novell IPX
Autosensing ports	RJ45 for on-board 10/100 BaseT
Automatic IP configuration	
SNMP support	
Printing	AppleTalk, Pserver, SMB (peer-to-peer), LPD
Regulatory Approvals	
Safety	CE Mark, CSA, TUV/GS, UL, CB Scheme
EMC	EN55022 Part B (CE marked), FCC Class B, VCCI II
Power supply and consumption	Autoswitching 110/220 V 50/60 Hz for global use, 7.5 amps @ 100-127 V 3.75 amps @ 200-240 V
Dimensions	546 x 476 x 190 mm
Hardware	Intel Pentium III CPU @ 1 GHz, 256 MB SDRAM (up to 512 MB w/ upgrade), 133 MHz system bus, 512k level two cache
EFI video interface card	Fiery RIPChips™, ECT Compression for flexible compressions ratios and visually lossless image quality
40 GB hard disk	
Internal 40X CD-ROM	
Internal 250 MB ZIP drive	
Operating System	Windows NT Pentium III, 256 MB SDRAM, 9.1 or 40 GB hard drive, Unix/PC/Mac compatibility



you can  
**Canon**

**Canon Inc.**  
30-2, Shimomaruko 3-Chome, Ohta-ku,  
Tokyo 146-8501, Japan  
[www.canon.com](http://www.canon.com)

Europe, Africa and Middle East  
**Canon Europa N.V.**  
P.O. Box 2262, 1180 EG Amstelveen,  
the Netherlands  
[www.canon-europe.com](http://www.canon-europe.com)



English Edition 0036W854  
© Canon Europa N.V., 2003 (0603)

™ All company and/or product names are trademarks and/or registered trademarks of their respective manufacturers in their markets and/or countries. Canon reserves the right to change specifications without notice.