

you can
Canon

CLC1160
CLC1180

Superior quality network
printers for graphic
arts professionals

*Colour beyond
your wildest dreams*



Canon's new generation CLC1160/CLC1180 network imaging devices break every boundary - for colour, precision image quality, speed, productivity, reliability and sheer networking power.

Keeping pace with your imagination

Just how professional do you want to be? Canon's latest digital colour solutions extend the boundaries of what can be achieved with an in-house printer.

Now, finally, there is a network imaging solution that can keep pace with your imagination.

You can produce your proofs or short run colour documents with speeds of 11 ppm A4 colour and 42 ppm in black & white and with 800 (equivalent) x 400 dpi - 256 half-tone gradations, all of your output will be of the highest quality.

The CLC1160/1180 also have the capacity to handle up to 4,400 sheets with the optional paper tray. There are a host of finishing options available such as

stapling and sorting with full double-sided printing on the CLC1180; you can even personalise each and every document through variable data printing.

The CLC1160/CLC1180 Canon printers are packed with features delivering a range of real business benefits.



400 dpi



800 dpi



Available with optional paper tray

Features that make the difference

The Canon CLC1160/1180 innovative features improve in-house colour reproduction even further, extending the quality and capabilities of print for graphic arts professionals.

The new Canon CLC1160/1180 printers feature new Tag Bit – Technology that is designed for the perfectionist.

Tag Bit recognises type, key-lines and other solids and prints them at double the resolution of half-tones. That means no ragged edges – just clean, sharp lines.

Creative freedom

Canon's new CLC1160/1180 models give users total creative freedom through the ability to manipulate practically every variable element in the production process.

Over-size – full-bleed effect up to A3

A3 paper measures 297 mm x 420 mm. The new Canon CLC1160/1180 takes paper up to a maximum size of 303 mm x 443.5 mm which means that you can produce full-bleed proofs or posters at A3 after trimming.

The additional printable margin allows you to print cropmarks, margin notes, or even A3+ posters.*

* Ink saturation on the margins outside the A3 area can diminish slightly.

The following features are optional using the Graphic Arts Package:

Half-tone screening – simulates the final dots that will be imaged on films or plates.

Multiple plate separations – support CMYK plus one or more Pantone colours.

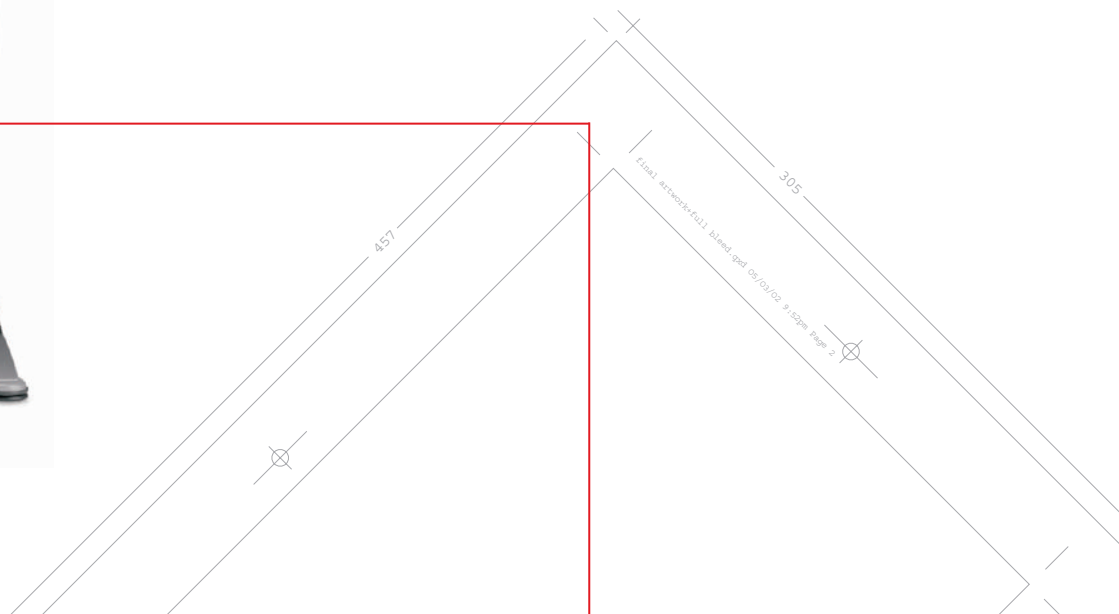
Soft proofing – shows accurate on-screen preview of ripped print jobs.

Auto-trapping – automatically corrects mis-registration.

Paper simulation – allows you to factor in the colour of the stock on which the job will be printed.

TIFF/IT input – allows input of TIFF/IT files to the RIP through a hot folder.

Spot-On colour - means you can store named colours in the Controller PS-NX800 to ensure absolute consistency, for example whenever a company logo is printed.



Canon PS-NX800*

Combining a Canon CLC1160/1180 printer with the Canon PS-NX800 server, which features Fiery System 5.5 software, extends the scope of network printing further still.

It means that anyone on the network has the facility to exploit a huge range of editing and finishing options to create stunning colour documents and A3+ posters, and, of course, print them at high speed. The PS-NX800 brings effortless control of the production process from previews, editing, printing, sorting and finishing.

Running Fiery Command Workstation™ 4 software for PC environments or 4 LE for Macintosh environments software, the PS-NX800 ensures optimum management and manipulation of centralised print jobs from desktop computers, advanced print and colour management and full network compatibility.

Fiery Graphic Arts Package

The standard Fiery Graphic Arts Package is a comprehensive suite of specialised design tools which enables graphic arts professionals to achieve new standards of colour management and print quality.

Fiery WebTools™

Administer the PS-NX800 via any Java-enabled browser. View and manage jobs as well as install drivers and utilities remotely.

Fiery ColorWise™

Colour management software for highest quality and accuracy of colour output. Designed for extensibility, ColorWise allows you to add custom and future colour profiles.

Fiery Variable Data Printing Support

The Canon PS-NX800 provides the industry leading platform for vast variable data printing. These VDP solutions are compatible with the most comprehensive array of VDP languages, including Fiery FreeForm, PPML and a host of proprietary languages.

Fiery DocBuilder™Pro™ optional

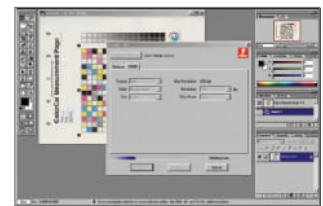
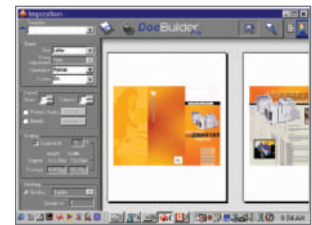
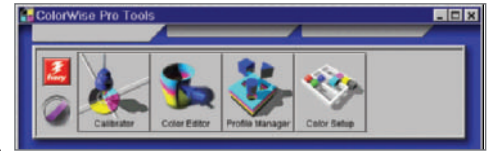
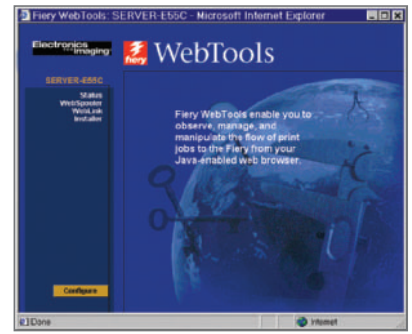
Edit and assemble entire documents before RIPping the files. The improvements in DocBuilder Pro include increased page layout accuracy and support for mixed page sizes, late editing and enhanced templates.

Fiery Scan™

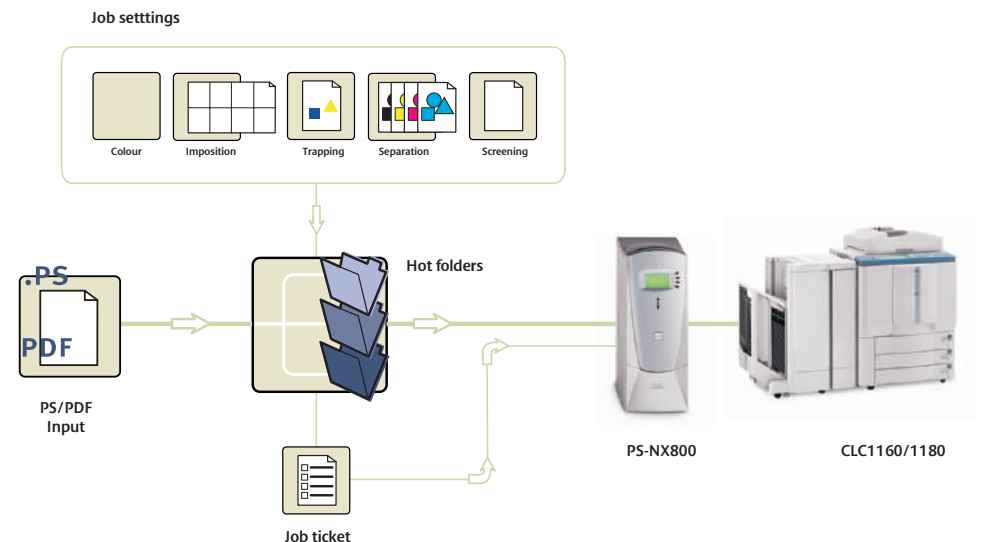
Scan remotely and distribute via FTP, Internet Fax, or email to any email account around the world, download the file directly to the Hold queue to build documents and save the scanned file directly to a PC. Scans can also be retrieved via the Fiery WebTools™ utility, local Fiery interface or TWAIN plug-in.

Fiery NetWise™

Ethernet, Token Ring, Web connectivity. Perform print jobs via email.



** The CLC1160/1180 are also compatible with the basic controller PS-NX500W. Please ask your Canon contact or dealer for further details.*



Consistent output

Quality and Performance

The Canon CLC1160/CLC1180 are designed for quality and performance, resulting in greater productivity, improved document management, seamless networking and assured quality of both colour and black & white output. An impressive combination of hardware and software utilities gives graphic arts professionals the speed, ease of use and precision needed for the most challenging print jobs.



CLC1160/CLC1180 Specifications

| | |
|-----------------------|--|
| Copy speed | A4 full colour 11 pages per minute A4 black and white 42 pages per minute |
| Warm-up time | approx 8.5 minutes |
| First copy | full colour 19.9 seconds black & white 11.4 seconds |
| Resolution | 800 dpi equivalent x 400 dpi 256 gradations per colour |
| Copying colours | full colour, mono colour and black |
| Zoom | 25 - 400% |
| Acceptable originals | sheets, books and three-dimensional objects up to 2kg |
| Maximum original size | A3 (297 x 420mm)/11x17 (279.4 x 431.8 mm) |
| Maximum print size | A3 over size, 303 mm x 443.5 mm (for crop marks) |
| Paper weights | 64 to 209 gsm |
| Paper feeding | |
| CLC1160 | 3 cassettes (550 sheets each), |
| CLC1180 | 2 cassettes (550 sheets each), stack by-pass: 250 sheets, (optional) side paper deck (2,500 sheets) |

| | |
|------------------------|---|
| Modes and features | area designation mode, marker editing, double-sided copying (CLC1180 only), cover mode, two-page separation, 2 in 1 mode, sharpness, frame erase mode, shift mode, colour creation mode, one touch colour, colour balance, image creation mode, multi-page, enlargement, automatic colour selection, transparency interleaving mode, auto calibration |
| Options | RDF (Document Feeder), 20-bin stapler sorter, 2,500 sheet paper deck, film projector, document tray, editor, control card |
| Dimensions (W x D x H) | 768 x 774 x 1,000 mm |
| Weight | |
| CLC1160 | 277.5 kg |
| CLC1180 | 291.5 kg |
| Power requirement | 230V/50Hz |
| Power consumption | max.1.5 kW |

™ All company and/or product names are trademarks and/or registered trademarks of their respective manufacturers in their market and/or countries.
Canon reserves the right to change specifications without notice.



you can
Canon

Canon Inc.
www.canon.com

Canon Europa N.V.
www.canon-europe.com

English-UK Edition 0051W051
© Canon Europa N.V., 2002 (0205)

Canon (UK) Ltd
Woodhatch,
Reigate
Surrey RH2 8BF
Telephone No: 08000 353535
Facsimile No: 01737 220022
www.canon.co.uk

Canon Ireland
Arena Road,
Sandyford Industrial Estate
Dublin 18, Ireland
Telephone No: 01-2052400
Facsimile No: 01-2958141
www.canon.ie

