

you can  
**Canon**

**CLC3200**  
colour production

*Profit from short-run  
colour perfection*





## *At last: affordable and professional colour production*

Your customers require high speed, high quality colour on demand - from a variety of applications, with productive and fully finished output. Now you can meet their needs, as well as your investment budget, with the innovative CLC3200. Designed to deliver light, short-run colour production, it offers all the benefits of cost-effective operation combined with truly professional performance.

Utilising new and advanced technologies from Canon - the leading company in colour reproduction - the CLC3200 provides seamless network printing on the widest range of media available. All complete with superior colour management capabilities and sophisticated in-line finishing. So you can handle more work, more effectively - for even the most demanding clients.





#### IDEAL PRICE/PERFORMANCE RATIO

The CLC3200 is uniquely positioned to offer high performance colour output alongside truly affordable equipment investment. It is capable of providing the versatility and productivity that is usually associated with heavy production devices, including full variable data printing. All integrated with easy, cost-effective and highly reliable operation. Allowing you to deliver light, short-run colour production.

#### POWERFUL PRODUCTIVITY

Take advantage of a four drum, single pass engine speed of 32 ppm (A4) for both full colour and monochrome production. The standard 'stackless' duplexing unit provides productive 27 ipm double-sided output. There's full support for numerous software applications and file formats. Command Workstation ensures flexible, efficient print job control. While finishing extends to full saddle stitching, with the ability to add booklet covers in copy mode.

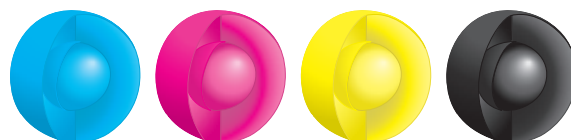
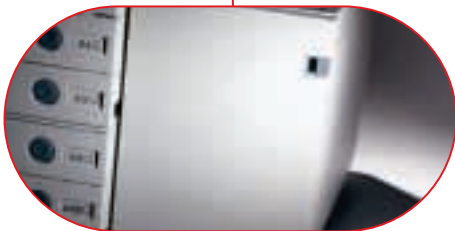


#### ULTRA FLEXIBLE, MODULAR SYSTEM

You can configure the compact CLC3200 exactly as required. Separate print and scanner modules let you select copier only, printer only or a combined printer/copier multifunctional system. A wide range of accessories are available - providing the feeding, high paper capacity and flexible finishing that suits your demands. With Canon's Print Controller featuring all the very latest colour management advances.

#### SUPERIOR 'OFFSET-STYLE' QUALITY

The CLC3200 sets new standards in colour quality, delivering professional, matt finish prints. This is achieved by Canon's unique, enhanced polymer 'S-type' spherical toner. Oil-less fixing ensures the highest quality with optimal gloss value, complete with an extended colour gamut volume. Print resolution reaches right up to a 2,400 dpi equivalent x 600 dpi - with 256-colour gradations. So you can be confident of supplying the quality that clients demand.





## *Versatility and reliability beyond all expectations*

Today, to be truly successful, you have to be capable of dealing with a vast array of differing input sources from your customers - while expanding your output capabilities. Now the innovative CLC3200 system not only meets but exceeds these expectations. In terms of both seamless software integration and hardware versatility, you have the tools at hand to provide intelligent solutions to the toughest projects. Delivering colour perfection, without compromise.

### EXTENSIVE MEDIA SUPPORT

The CLC3200 features an intermediary transfer belt system that enables it to accept a highly diverse range of printing materials, including coated and non-coated paper. Tab sheet printing and insertion is supported. An enhanced paper handling capacity takes everything from envelope formats up to large SRA3 sizes, with a wider image area (305 mm), for all thicknesses from 64 to 253 g/m<sup>2</sup>. There's auto duplexing for extra heavy paper (209 g/m<sup>2</sup>) on a maximum paper size of 305 x 457 mm. While the 6-way, 4800-sheet paper feeding capacity is ideal for all your short-run colour production needs.







### ABSOLUTE RELIABILITY AND EASE

The durable design and easy maintenance features of the CLC3200 ensure complete reliability. A straight paper path and stable colour management technologies provide maximum uptime. While toner is user replaceable for added ease. Operating the system is straightforward and simple. A large-format, touch panel colour display screen provides clear menu navigation for intuitive operation. Also a standard remote user interface with a built-in web browser function gives users complete control from connected desktops.

### COMPLETE NETWORK CONTROL

With the CLC3200, you benefit from full networking flexibility. A major advantage is the Personal Image Server, which stores colour documents. This allows you to combine scanned originals and electronic data from various applications, to create new documents. There's also an intelligent send function with full colour capability - so you can send documents direct to a client's email address as well as to a file server or database. Thus saving time and dramatically improving your job flow.

### FULL PRODUCTION ACCESSORIES

When you need to deliver fully finished documents to your clients, the CLC3200 won't let you down. A complete range of flexible finishers are available. They offer everything from simple stacking right up to folding and saddle stitching for professional booklet production - with signature booklet printing. In-line finishing reduces the need for human intervention. Other production-orientated accessories include an Automatic Document Feeder as well as a high-capacity side paper deck.

### ONGOING SERVICE EXPERTISE

With Canon, you can always depend on full service support, with local and dedicated technical servicing at hand for maximum uptime. E-maintenance is also available as an option. This pro-active service provides remote diagnostics, giving security and complete servicing control.



## *Advanced colour management for every eventuality*

For clients that require highly advanced colour printing performance with enhanced control, the solution is Canon's optional Colour Network Printer Controller. This provides expert-level intelligent tools to ensure consistency, complete colour accuracy and powerful printing performance. With an array of sophisticated features that are surprisingly easy to use, you can deliver colour work that is guaranteed to meet the highest professional standards.

### COMMAND WORKSTATION

The Print Controller features Command Workstation™ as standard utility software. Designed to make centralised print management simple, it sets the standard for conveniently managing and manipulating digital print jobs. This includes extensive job controls, thumbnail and full screen job previews, load balancing and archiving of files for accessing and later reprinting. All print ticket settings can be modified before finalising production. And different digital files, including hard copy scans, can be merged into a single, printable document. Plus a job log window provides detailed information on every print job.



#### POST-RIP CALIBRATION

Post-RIP calibration from ColorWise™ is integrated in the Print Controller. As this makes RIPping calibration independent, jobs with different calibration profiles can be printed several times, without the need for re-RIPping. Flexibility is built into the production process by keeping final calibration decisions to the last possible stage. This also applies to variable data printing, where Fiery FreeForm master pages are RIPped once and held until a later date for printing. Calibration is not applied until variable information is added.

#### FULL SIMULATION

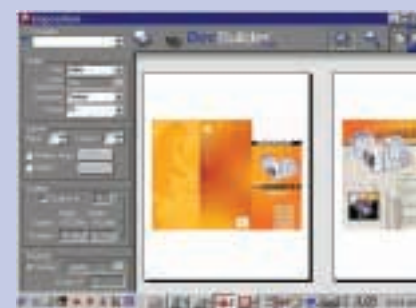
Now you can benefit from full simulation for both accurate proofing and short run colour printing. Full CMYK simulation with GCR (Grey Colour Replacement) calibrates the colour space of the input source and matches that with the colour space of the output device. For exact proofing, full source GCR is utilised. While for short run printing a new method, full output GCR calibration, is ideal. This maintains the grey balance from print no 1 to print no 1000 in the same run length.

#### SPOT-ON™ CONSISTENCY

Spot-On™ is a practical utility programme that helps you easily apply user-defined spot colours, such as a company logo, to printing. It manages all named colours on the server - and allows editing of CMYK values, for an exact match. Spot-On™ also enables you to create custom colours with specific names and CMYK values. This helps you conceptualise and communicate custom colours with greater ease. You can also create a customised named colour list, ensuring organised and easy management.

#### DOCBUILDER™ PRO

DocBuilder Pro is available as an optional software application. It allows powerful, affordable and easy imposition of documents - regardless of the originating platform, application or file format - thus saving time. New features include mixed page support, negative gutter sizes support, customised trim marks/fold marks, right edge binding, the ability to add, delete and duplicate sheets, gang-up unique collate and late editing.



# CLC 3200 Specifications

Type	Colour Digital Multifunctional Imaging System
Imaging System	Laser Dry Electrostatic Transfer
Developing System	Dry Ni Component System
Fixing System	Heat Roller Fixation System
CPU	Dual Canon Custom Processor, 250MHz
Image Server Memory	Standard 768MB, 40GB HDD
Interface	Standard Ethernet (100BASE-TX / 10BASE-T)
First-copy Time	9.8 sec. B&W 13.1 sec. Full Colour
Warm-up Time	Approx. 6 min.
Originals	Sheets, books and solid objects (Up to 2 Kg)
Maximum Original Size	A3
Copy Sizes	
Cassette	A5R - A3
Manual	A5R - SRA3 (320 x 450mm)
Image Server	40GB
Mail Boxes	Support for Max 100 Mail boxes
Copy Reservation	5 Jobs
Resolution	
Scanning	600 x 600dpi
Copying	600 dpi x 600 dpi (colour & b/w)
Printing	Up to 2400 dpi equivalent x 600 dpi (colour & b/w)
Halftone	256 Gradations
Density Adjustment	Automatic Exposure/Manual
Engine Speeds	
A4	32ppm full colour and b&w
A3	16ppm full colour and b&w
Duplexing	Standard automatic stackless Support for auto duplex up to 209 g/m <sup>2</sup> and from Stack Bypass
Magnification	
Standard Mode	100%
Preset Reduction	25%, 50%, 61%, 70%, 81%, 86%
Preset Enlargement	115%, 122%, 141%, 200%, 400%
Zoom Mode	25% - 400% (in 1% increments)
Multiple Copies/Prints	1 to 999
Paper Supply	
Standard	Dual 550-sheet Universal Paper Cassettes (Up to 305 x 457mm) (1100 Sheets at 80 g/m <sup>2</sup> ) Stack Bypass (Up to 320 x 457mm) (100 Sheets at 80 g/m <sup>2</sup> )
Optional	Dual 550-sheet Universal Paper Cassettes (Up to 305 x 457mm) (1100 Sheets at 80 g/m <sup>2</sup> ) Paper Deck - 2,500 A4 Sheets at 80 g/m <sup>2</sup> Max. Total = 4,800 Sheets at 80 g/m <sup>2</sup>
Paper Weights	64 to 209 g/m <sup>2</sup> (Cassettes) 64 to 253 g/m <sup>2</sup> (Manual)
Dimensions	799mm x 620mm x 786mm
Weight	126 kg
Power Requirements	240V, 15A, 50Hz/60Hz
<b>Multi PDL Network Printer Unit-C1 (Optional)</b>	
PDL Support	PCL5c, Adobe PostScript 3, PDF 1.3, TIFF 6 (auto-switching)
Memory	Standard 128MB, upgradable to 256MB
Hard Disk	10GB
CPU	Intel Mobile Pentium III at 850MHz
Fonts	136 Adobe PostScript Fonts, 45 Scalable PCL Fonts
Printer Driver	PS driver for Windows® 98/ME/NT4.0/2000/XP PS driver for Mac OS9.0 and Mac OS X PCL 5c driver for Windows® 95/98/ME/NT4.0/2000/XP Standard: Ethernet 10/100Base-T (RJ-45), Parallel Port (Type B) Optional: Token Ring
Network Interface	
Network Protocol and Frame Type	Automatic Switching - IPX/SPX, TCP/IP, 802.2, 802.3, EtherTalk, SMB
Network Services	Novell NDS, Pserver, SMB, AppleTalk, LDP, Port 9100, IPP, FTP NetWare 6 (iPrint), E-mail Client (for Scan), E-mail Print (PDF/PS/TIFF6)
Print Utilities	Command Workstation, Fiery Downloader, Fiery Scan, Web Tools, ColorWise Tools, Spot-On, Auto-Trapping, DocBuilder Pro (Optional).
<b>Colour Universal Send Kit-A1 (Optional)</b>	
Preview Access	Multipage document preview function Single Sign On (Windows 2000 Server), Single Device Log-In (SDL)
Sending Methods	e-Mail, iW Document Manager to Server (FTP,SMB,NCP)
Address Book	LDAP and Ad Hoc entry and storage
File Format	Single page TIFF, multi-page TIFF, PDF, Multi page PDF
Sending Sizes	A5 - A3
<b>Colour Image Reader-C1 (Optional)</b>	
Scanning Resolution	up to 600x600 dpi
Smoothing	Super Smoothing Technology
Power Consumption	1.5kw max.
Scanning Area	Up to A3
Driver	Network Twain (Optional)
Dimensions (H x W x D)	90mm x 585mm x 540mm
Weight	13.5kg
<b>DADF-K1 (Optional)</b>	
Original Sizes	A5 - A3
Original Weights	52 - 105 g/m <sup>2</sup>
Original Capacity	30 sheets (A4) 15 sheets (A3)
Dimensions (H x W x D)	165mm x 580mm x 506mm
Weight	13 kg

<b>Pedestal-C1 (Optional)</b>	
Dimensions (H x W x D)	312mm x 620mm x 705mm
Weight	24 kg
<b>Cassette Feeding Unit-X1 (Optional)</b>	
Number of Drawers	2x Front-loading adjustable universal drawers
Paper Capacity	2 x 550 Sheets
Acceptable Paper Weights	64 - 209 g/m <sup>2</sup>
Dimensions (H x W x D)	312mm x 620mm x 705mm
Weight	30 kg
<b>Paper Deck-P1 (Optional)</b>	
Paper Size	A4
Paper Weights	64 - 209 g/m <sup>2</sup>
Capacity	2,500 sheets at 80 g/m <sup>2</sup>
Dimensions (H x W x D)	432mm x 324mm x 591mm
Weight	30 kg
<b>Finisher-M1 (Optional)</b>	
Number of Trays	One
Acceptable Paper Sizes	A5R - A3 and 305 x 457mm
Acceptable Paper Weights	64 to 253 g/m <sup>2</sup>
Max. Capacity	1,000 Sheets (A4) 500 Sheets (A3)
Staple Mode	30 Sheets (A4) 15 Sheets (A3)
Staple Cartridge	Staple-L1 (3 Cartridge/Case; 3000 Staples Cartridge)
Dimensions (H w D x W)	362mm x 574mm x 553mm
Weight	18 kg
<b>Finisher-N1 (Optional)</b>	
Number of Trays	Two
Acceptable Paper Sizes	A5R to A3 and 305 x 457mm
Acceptable Paper Weights	64 to 253 g/m <sup>2</sup>
Max. Capacity	1,000 Sheets (A4, B5, A5R) 500 Sheets (A3, B4, A4R, B5R)
Staple Positions	1 - any corner 2 - side margin
Staple Cartridge	Staple-E1 (3 Cartridge/Case; 5000 Staples Cartridge)
Dimensions (H w D x W)	1066mm x 682mm x 615mm
Weight	37 kg
<b>Saddle Finisher-N2 (Optional)</b>	
Number of trays	Three
Acceptable Paper Sizes	A5R to A3 and 305 x 457mm
Tray Capacity	1,000 Sheets (A4, B5, A5R) 500 Sheets (A3, B4, A4R, B5R)
Staple Position	Multiposition Stapling (1) Top Corner (2) Side Margin (3) Saddle-stitch
Stapling Capacity	50 Sheets (A4) 15 Sheets Saddle-stitched (A4, A3)
Saddle-stitch Specifications	
Paper Sizes	B4, A4R, A3
Paper Weight	64 to 105g/m <sup>2</sup> 64 to 253g/m <sup>2</sup> (Cover only)
Stapling Capacity	15 Sheets (60 pages)
Folding	V-folding Standard
Staple Cartridge	Staple-D2 (3 Cartridge/Case; 2000 Staples Cartridge) Staple-E1 (3 Cartridge/Case; 5000 Staples Cartridge)
Dimensions (H x W x D)	1066mm x 682mm x 615mm
Weight	57kg
<b>Copy Tray Unit-H1 (Optional)</b>	
Number of Trays	One
Capacity	100 Sheets (A4)
Dimensions (H w D x W)	134mm x 254mm x 371mm
Weight	1 kg
<b>Super-G3 Fax Board-M1 (Optional)</b>	
Applicable Line	Public Switched Telephone Network (PSTN)
Connection Lines	One
Transmission Time	ECM-MMR Approx. 3 seconds per page** (@33,600Kbps)
Compression System	MMR, MR, MH, JBIG
Sending Sizes	A5R to A3
Auto Dial Functions	Address Book: 1800 Destinations (Total)
Image Memory	Approx. 3,700 pages
Max. Confidential Fax Inboxes	100
<b>Accessories</b>	
Image Reader-C1, DADF-K1, Colour Universal Send Kit-A1, Resolution Switching Board-A1, Super-G3 Fax Board M1, iR Security Kit -A1, Multi PDL Network Printer Unit-C1, Token Ring Network Board TB-84, Plain Pedestal-C1, Cassette Feeding Unit -X1, Paper Deck-P1, Finisher-M1, Finisher-N1, Saddle Finisher-N2, Copy Tray-H1, Document Tray-J1, FL Cassette-X1, Key Switch Unit -A1, Card Reader- D1, Card Sets.	
***Approximate 3-second-per-page fax transmission time based on ITU-T No.1 Chart (MMR,Standard Mode)at 33.6 Kbps modem speed when transmitting to another v.34 machine.ThePublic Switched Telephone Network (PSTN)currently supports 28.8 Kbps modem speeds or lower,depending on telephone line conditions."	

you can  
**Canon**

Canon Inc.  
30-2, Shimomaruko 3-Chome, Ohta-ku,  
Tokyo 146-8501, Japan  
www.canon.com

Europe, Africa and Middle East  
**Canon Europa N.V.**  
P.O. Box 2262, 1180 EG Amstelveen,  
the Netherlands  
www.canon-europe.com



English Edition 0036W852  
© Canon Europa N.V., 2003 (0603)

™ All company and/or product names are trademarks and/or registered trademarks of their respective manufacturers in their markets and/or countries. Canon reserves the right to change specifications without notice.