

you can
Canon

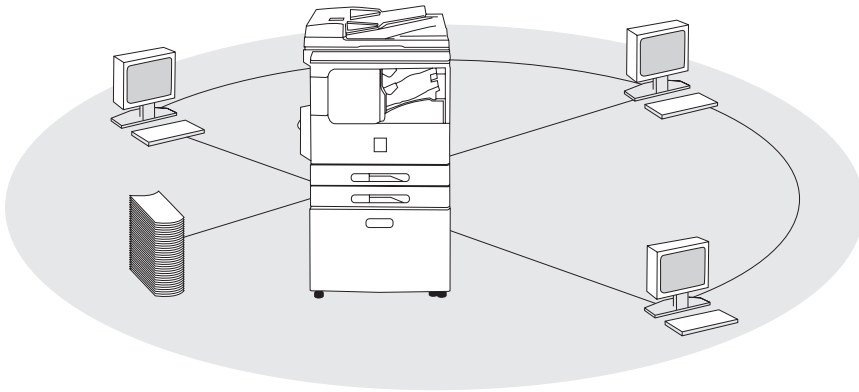
iR1600
iR2000

Multifunctional Digital Systems

*Go digital - and benefit from
affordable, versatile performance*



- 16 ppm output (iR1600)
- 20 ppm output (iR2000)
- Fully featured digital copying
- Network printing capability
- Professional image quality
- Compact and reliable design
- Up to A3 paper handling
- Easy and efficient operation
- Extensive paper supply
- Built-in finishing options



Add on Canon's network printing capability to increase productivity

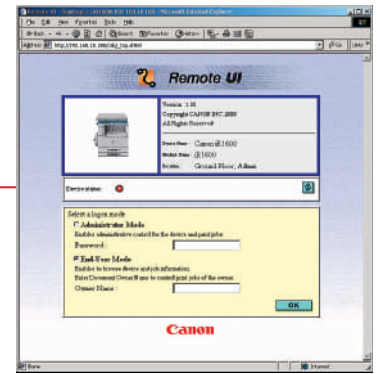
Enabling efficient solutions

Benefit from a compact, cost-effective digital copier that delivers both quality and productivity. Select the entry-level iR1600 for smaller workgroups - or the more powerful iR2000 for higher volume output. Either way you profit from a flexible, modular design that allows easy configuration to suit your exact needs, including a network printing capability. You can even take advantage of Canon's smart solutions that provide powerful applications for workflow management and full document accounting. Protecting your investment as your business grows.

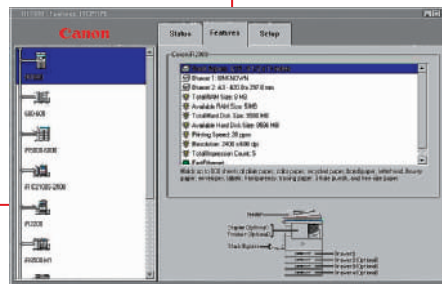
Enhancing image quality

Both digital systems offer a high 1200 x 600 dpi resolution, to deliver consistently high image quality for text and images. Include the network printing option and the resolution rises to 2400 x 600 dpi, with AIR smoothing technology. Optional PCL printing is also available to maximize printing output, providing a truly professional finish.





Enhance workgroup efficiency via the Remote User Interface



Simplify systems management with Canon's NetSpot® Suite

Productive accessories

Innovative and space-saving finishing options include a built-in finisher offering full sorting and stapling functions. Or select an inner 2-way tray that separates out copies and prints. An ADF (Automatic Document Feeder) handles all originals smoothly. Plus the standard paper supply can be supplemented by up to three additional 250-sheet cassettes.

Integrated ease

A clear, intuitive control panel ensures effortless operation at all times. The network printing option includes a Remote UI (User Interface) for workgroups - delivering seamless handling of all print jobs direct from the desktop. A 10 GB hard disk can also be added to provide storage and spooling facilities for network printing, improving printing efficiency.

Solutions to save time and money

Digital versatility lets you share departmental printing resources far more efficiently - with extended solutions such as clustering and redirection. So now you can handle peak workgroup printing demand smoothly, saving time and increasing reliability. While full document accounting enables effective cost control and optimum allocation of all resources.



Specifications **iR1600 / iR2000**

Type	Desktop type
Copying System	Laser dry electrostatic transfer system
Platen	Fixed
Originals	Paper sheet, books and three-dimensional objects up to 2 Kg
Maximum Original Size	A3
Copy Sizes	A6-A3
Scanning Resolution	
Printing Resolution	1,200 x 600 dpi (Copy) 2,400 x 600 dpi (PDL Print)
Zoom	50%-200% (1% increments)
Speed	16 / 20 (A4)
FCOT	8.2 sec. Approx.
Warm-up Time	30 sec. or less
Multiple Copies	1-99
Dimensions (W x D x H)	615 x 631 x 560 mm iR1600 615 x 631 x 645 mm iR2000
Weight	38 Kg iR 1600 43.4 Kg iR2000
Power Consumption	940 W or less
Paper	64 to 90 g/m ²
Input Capacity	250 sheets x 1 iR1600 250 sheets x 2 iR2000, Bypass capacity 100 sheets
Paper Options	
Optional Cassettes	Up to 250 x 2 iR2000 Up to 250 x 3 iR1600 Finisher, 2 Way Inner Tray, ADF
Image Memory	16MB standard Up to 48 MB (optional)

PRINTING (OPTIONAL)	<p>Processor Power PC405 200Mhz RISC Processor</p> <p>RAM 8 MB (Up to 72 MB)</p> <p>PDL PCL5e / PCL6</p> <p>Resolution 600 x 600 dpi, 256 Tones (up 2,400 x 600 dpi with AIR)</p> <p>Printing Speed 16 ppm / 20 ppm</p> <p>Paper Size up to A3</p> <p>Hard Disk 10 GB (Optional)</p> <p>Network Connectivity USB, Parallel, Ethernet (10/100BaseTX) (Optional)</p> <p>Network Protocol TCP/IP (LPD/LPR), IPX/SPX (Pserver/NDS/Rprinter/Nprinter),</p> <p>Supported OS Windows® 95/98/NT4.0/2000/ME/XP Solaris 1.1x, 2.5 or later</p>
OPTIONAL ACCESSORIES	ADF, Finisher, Inner 2 Way Tray, 32MB Memory Expansion, Card Reader, Cassette (1 tray), 2 tray iR 2000 only, 3 tray iR1600 only, Pedestal, Printer Board, Ethernet Network Interface adapter, Hard Disk, Flash ROM Module
<p><small>* All company and/or product names are trademarks and/or registered trademarks of their respective manufacturers in their markets and/or countries. Canon reserves the right to change specifications without notice.</small></p>	



you can
Canon

Canon Inc.
www.canon.com

Canon Europa N.V.
www.canon-europe.com

English Edition 0028W189

Canon (UK) Ltd
Woodhatch, Reigate
Surrey RH2 8BF
T: 08000 353535
F: 01737 220022
www.canon.co.uk

Canon Ireland
Arena Road, Sandyford
Industrial Estate
Dublin 18, Ireland
T: 01-2052400
F: 01-2958141
www.canon.ie



Canon's GENUINE logo means
quality all-round performance